

THE LANDMARK

PUBLICATION OF THE BLACKSTONE VALLEY HISTORICAL SOCIETY

Vol. 55

May 2014

No. 8

Continuing the Tradition ~ Preserving Our History

bvhsri.org • 1873 Old Louisquissett Pike (Rte 246) • PO Box 125, Lincoln RI, 02865

Dr. Kevin McBride Presents Results of the Archaeological Investigation into the 2nd Battle of Nipsachuck Swamp, North Smithfield, RI May 18

By Francine Jackson

Few people recognize the importance of the Blackstone Valley as the site of the major battle fields during King Philip's War. Dr. Kevin McBride, an expert on this part of our history, does, and has spent the better part of the past several years trying to determine the actual locations of these very important battles of 1675 and '76. Based on work conducted by him and others in 2010 and '11, the physical layout of the land was determined, and, as a result, artifacts from these events have been unearthed.

Dr. McBride, Director of Research at the

Mashantucket Pequot Museum and Research Center, and Professor of Anthropology at the University of Connecticut, will be presenting his

Valley, in her love of local history, her many years as a reporter for the Call, and as part of the Northern Rhode Island Chamber of Commerce. This lecture series is a tribute to her contributions to the Blackstone Valley during her too-short lifetime.

For many of us, Dr. McBride's talk will introduce a fascinating, and somewhat tragic, part of our local history. It is not to be missed.

The talk will take place in the Upstairs Hall of North Gate Toll House at 2 pm. Light refreshments will be served in the Downstairs Hall following the lecture.

THE LEGACY

Chris Nowak

*Chris Nowak
Lecture Series*

Dr Kevin Mc Bride



Funded by her Generous Bequest to BVHS

research as the second Chris Nowak Memorial Lecture for the Historical Society. Christine Nowak was a major figure in the Blackstone

IN MEMORIAM



Virginia Perry



Barbara Jackson

BVHS Nominating Committee Announces 2014-15 State of Officers

Annual BVHS Member Meeting & Elections Sunday, May 18 at 1:30 in North Gate Downstairs Hall

- | | |
|------------------|------------------|
| President | Jason Dionne |
| Vice President | John Houghton |
| Secretary | Francine Jackson |
| Treasurer | Lori Melucci |
| Members at Large | Gail Harris |
| | Glenn Laxton |
| | Bob Ferri |



Just one of many artifacts unearthed at the Nipsachuck Swamp site.

The Train Wreck that Changed Time ~ Valley Falls, RI ~ August 12, 1853

Member Lori Melucci created an exhibit for the September 28 BVHS Open House.

Following is the next installment from the display that day: **THE OUTCOME**

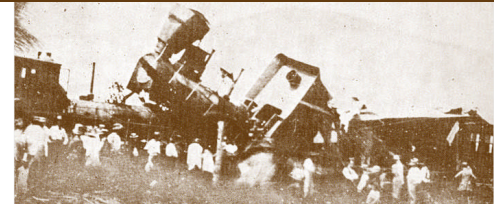
The most compelling issues in the Commissioner's investigation were the railroad's timetables and timekeeping. A critical safety problem had been brought to the attention of the railroads and the public. Almost at once, across the country, the railroads began to modify and extend their operating rules.

To make allowance for the variation in watches, some railroads began to build in a few minutes of additional time into

train schedules. Many instituted a requirement that each conductor should possess a good, accurate and reliable watch.

This bulletin put out by the Boston and Providence railroad on August 31, 1853 defines standard time for that railroad and institutes a series of procedures and an inspection process for timekeeping.

In 1853, "there was no standard time



**THE RAILROAD SLAUGHTER.
THE DISASTER ON THE WORCESTER
AND PROVIDENCE ROAD.**

for the world, the United States or the region, and there were hundreds of variations in local time. When it was noon in Washington, D.C., it was 12:23

Train Wreck Cont'd Page 2

Blackstone Valley
Historical Society



Strawberry Social

Please stop by for **Strawberry Shortcake** on June 21st from 2-4 pm
Tour historic North Gate Toll House & the Arnold's Lonsdale Bakery!
There will be special craft activities for children



Connections

www.bvhsri.com

The BVHS receives many inquiries about genealogy, family stories and how to contact others about these subjects. The Society wants to act as a facilitator for people to connect with one another. Ask questions, share a story or a photo. Who knows? You may uncover something special!

BLACKSTONE VALLEY HISTORICAL SOCIETY-A YEAR IN PHOTOS



'TUNES OF TRUE LOVE'

Michael DiMucci & David M. Marshall

WWII Vets Honored • BVHS ON THE GO • Open House Train Wreck display
♦ Comets, Narwhals, Baseball ♦
Technology • Live at North Gate
Concerts • Lincoln Downs remembered
♦ Holiday & Central Falls ephemera

An exciting year of exploration, enlightenment and fun

BROWN UNIVERSITY BASEBALL
A LEGACY OF THE GAME

NARWHALS
TODD WILSON

A MERRY CHRISTMAS

THE BLACKSTONE RIVER

Rushing water still presses,
against old and jagged walls;
for years having needed each other,
to navigate turns and falls.

Falls that drop smooth and rapid,
over debris and much aged rock;
below in calmer water,
lies wood from a broken dock.

These falls are a sudden reminder,
of the river's power as it flows;
but further down the miles,
kindness often shows.

The river's banks once supported,
large and vibrant industrial mills,
now abandoned and forgotten,
only a few pages of history each fills.

Some stretches now have parks,
with benches for one to rest;
while admiring the still present beauty,
having passed the timely test.

Wind, rain, and snowstorms,
cannot stop the endless flow;
at times deep and fast and slow.

The Blackstone river is living history,
so take longer than a glance,
watch and listen intensely,
don't pass up this lifetime chance!

Bob Ferri - Central Falls

Train Wreck Cont'd from Page 1

and 58 seconds in Boston, 12:17 and 29 seconds in Hartford, and 12:16 and 30 seconds in New Haven. Railroads ran on the time of the city where the line's head offices were located, creating a tangle of schedules."

The railroads began to contract with astronomers and observatories for authoritative, scientifically-obtained, accurate time. Since the introduction of the telegraph in 1844, American astronomers had been developing instruments that would record time observations accurately, and telegraph them. Accurate time was essential for many scientific observations, mapmaking, and most important to the general public, the railroads.
"At noon on Sunday, 18 November,

The beginning of the course of events that eventually led to the railroads' adoption of standard time may have well been the two terrible train wrecks in 1853, and in particular, the Valley Falls accident.

1883, North American railroads created the modern era of public timekeeping. They discarded the forty-nine different times by which they had been running freight and passenger trains, and replaced them with five new ones. Known collectively as Standard Railway Time, these operating times differed from each other by exact hours across the continent and were indexed to the Royal Observatory at Greenwich's meridian. They were the first elements in what would become the worldwide system of civil time zones that we now call Standard Time."

BVHS NEEDS YOU



BVHS would like to acknowledge the one hundredth anniversary of the start of World War I by honoring those local men who served in that war. If you have a relative who served in that war we would like to collect photos, military rank and service history and biographies of that loved one to use in a special display we are planning. These will then be kept in our archives to document the Blackstone Valley's contribution to this historic event.

If you have questions or wish to contribute to this project, please call or email **Susan Clarke at 451-0921** or susanraeclarke@gmail.com.